



E 2 GOLD INC

Lead. Innovate. Discover.

SYMBOL - ETU:TSX-V

Corporate Presentation | Fall 2021

Gold Resource Growth in North-Central Ontario



- ✓ The right jurisdiction with a **Hemlo-like NI 43-101¹** resource, poised for growth (open in all directions)
- ✓ Strong institutional support; **8 funds holding 27%**
- ✓ Completed oversubscribed \$5.6M financing (July)
- ✓ An experienced management team, who launched the company at record pace:
 - Founding (2020) to IPO to 1st drill program: all in 1 year
 - Actively acquiring new projects: increased flagship property 6-fold along with two new properties
 - Fully funded aggressive exploration program on multiple front, including 10,000 m of Phase 2 drill program



Note 1: NI 43-101 compliant, Inferred Resource of 6.20 million tonnes at 1.65 g/t Au for 328,800 ounces of gold, open on strike and at depth; NI 43-101 resource by P&E Mining Consultants (2020).

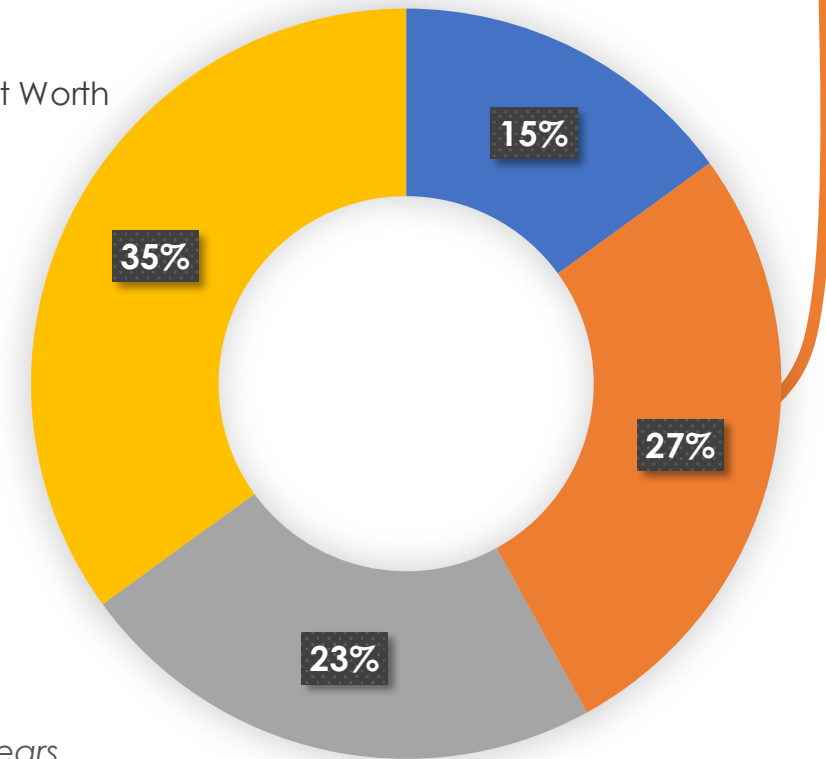
TSX-V:ETU Share Structure



Cap Table

Shares Issued	95,367,615
Warrants*	61,490,538
Options**	7,850,000
Total Shares Issued & Outstanding	164,708,153
Market Cap (@ \$0.21)	\$ 20,027,199

- Insiders
- Funds*
- High Net Worth
- Retail

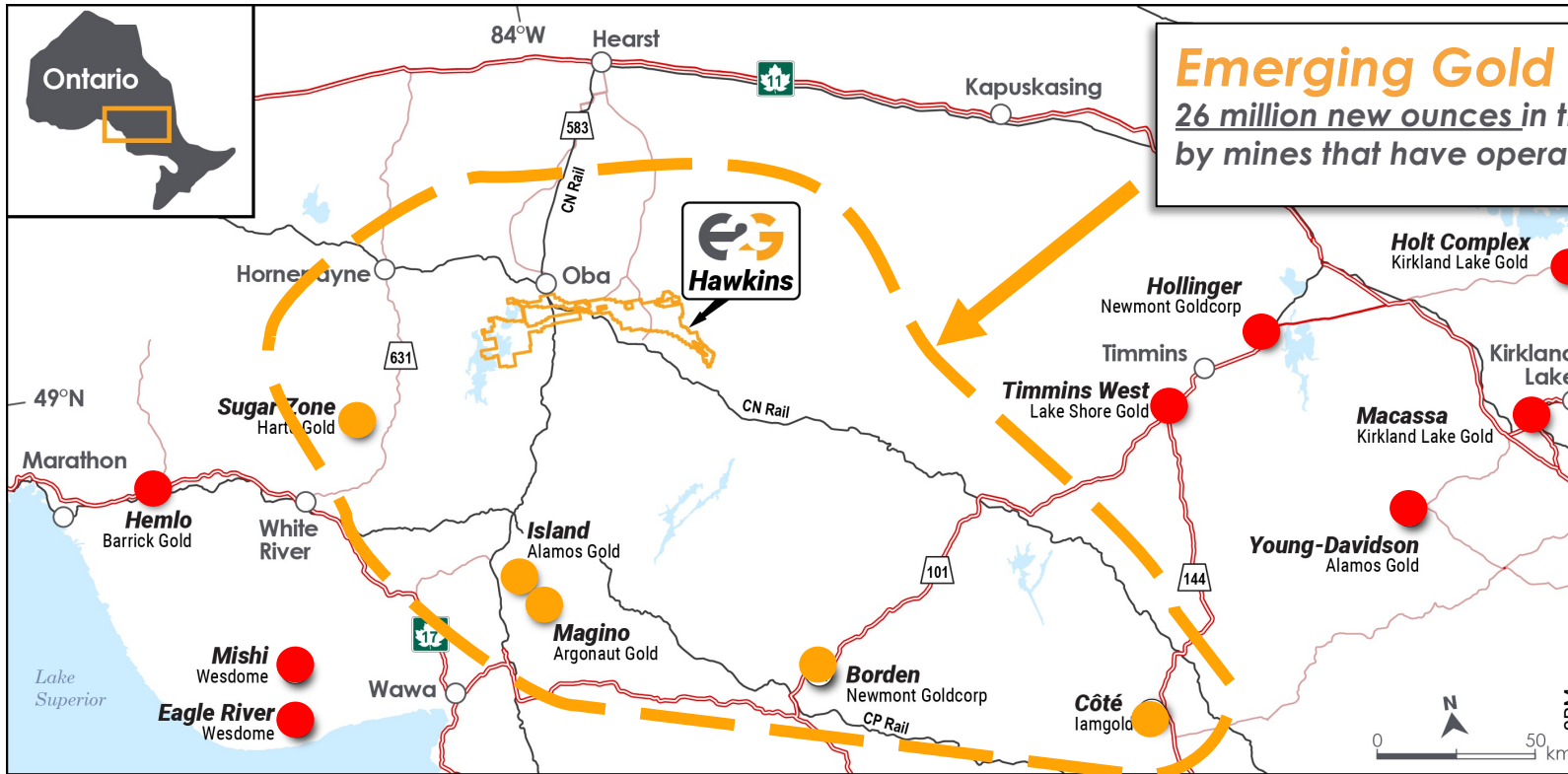


*9 funds, including **Crescat** holding 11%

*Warrant Breakdown: 45.7M @ \$0.15 for 2 years; 11M @ \$0.24 for 3 years; 2.7M @ \$0.28 for 2 years.

**Option Breakdown: 1M @ \$0.05 for 5 years; 6.8M @ \$0.13 for 2 years.

Hawkins Gold Project: A Regional Play

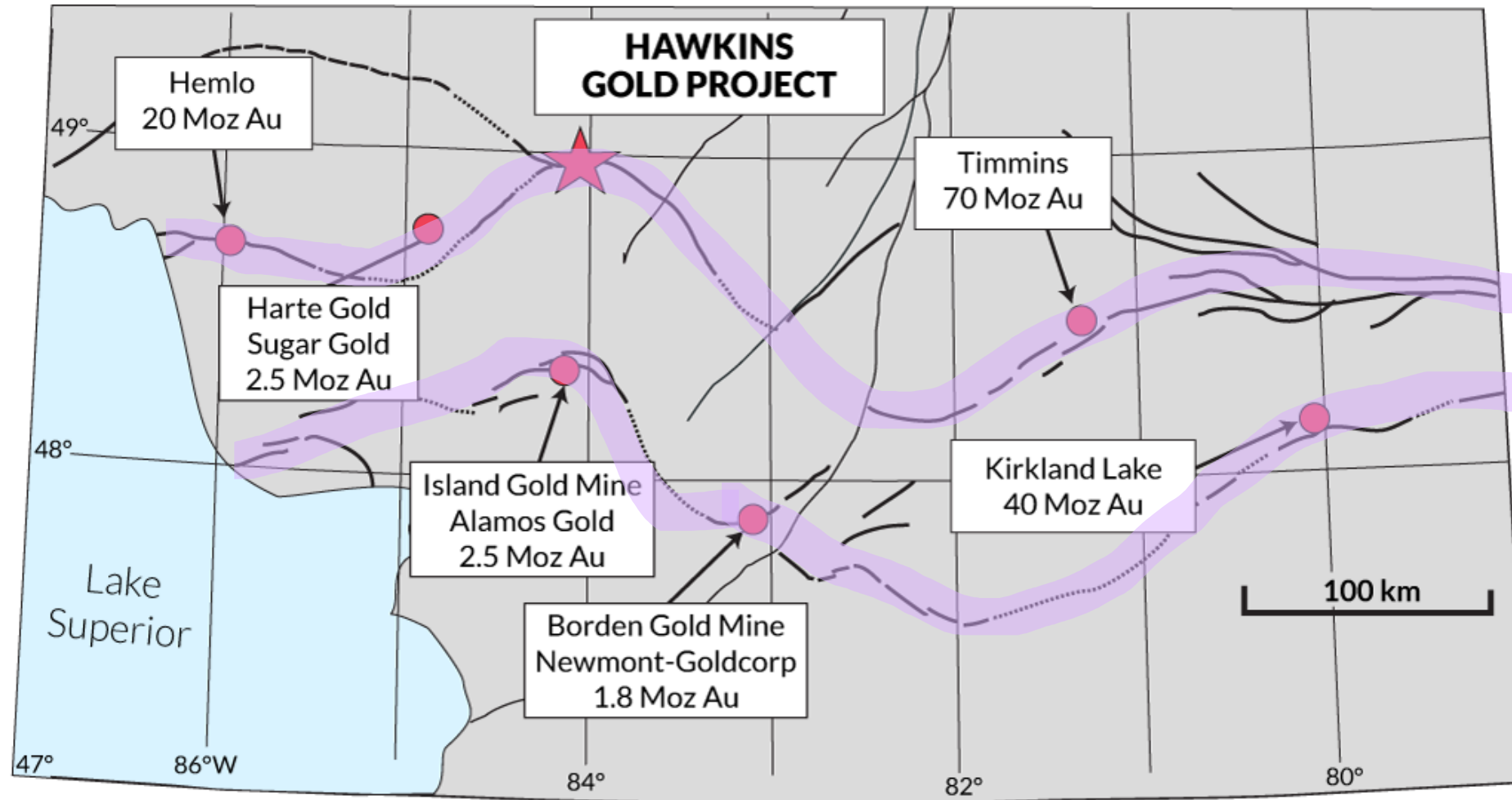


Emerging Gold Mining Region

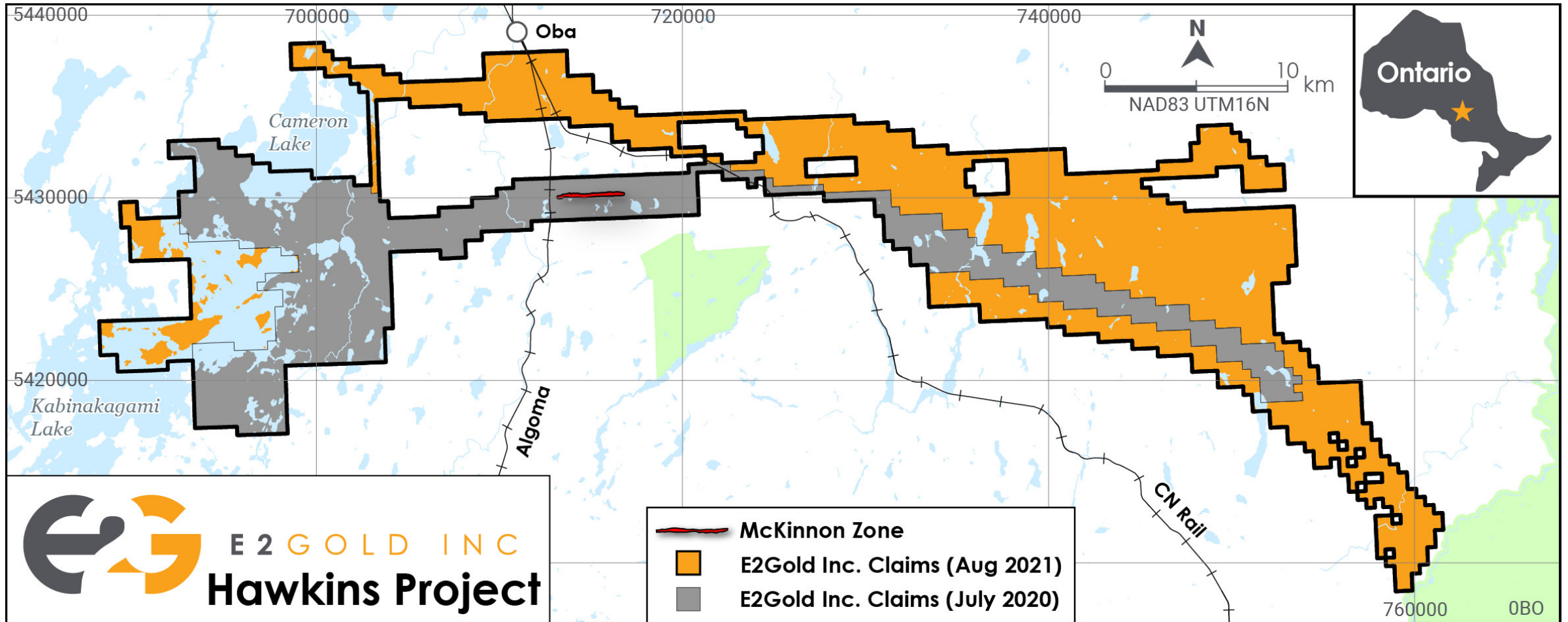
26 million new ounces in the past 15 years, surrounded by mines that have operated for decades

- 70 km long property package (54,400 ha or 544 km²)
- World-class jurisdiction
- NI 43-101 Resource¹: **6.2Mt at 1.65g/t for 328,800 oz Au**, based on 1980s Falconbridge Drilling
- McKinnon Gold Zone size potential: open along strike and below 150 m
- Major long-term producers

New Claims – Regional Trends



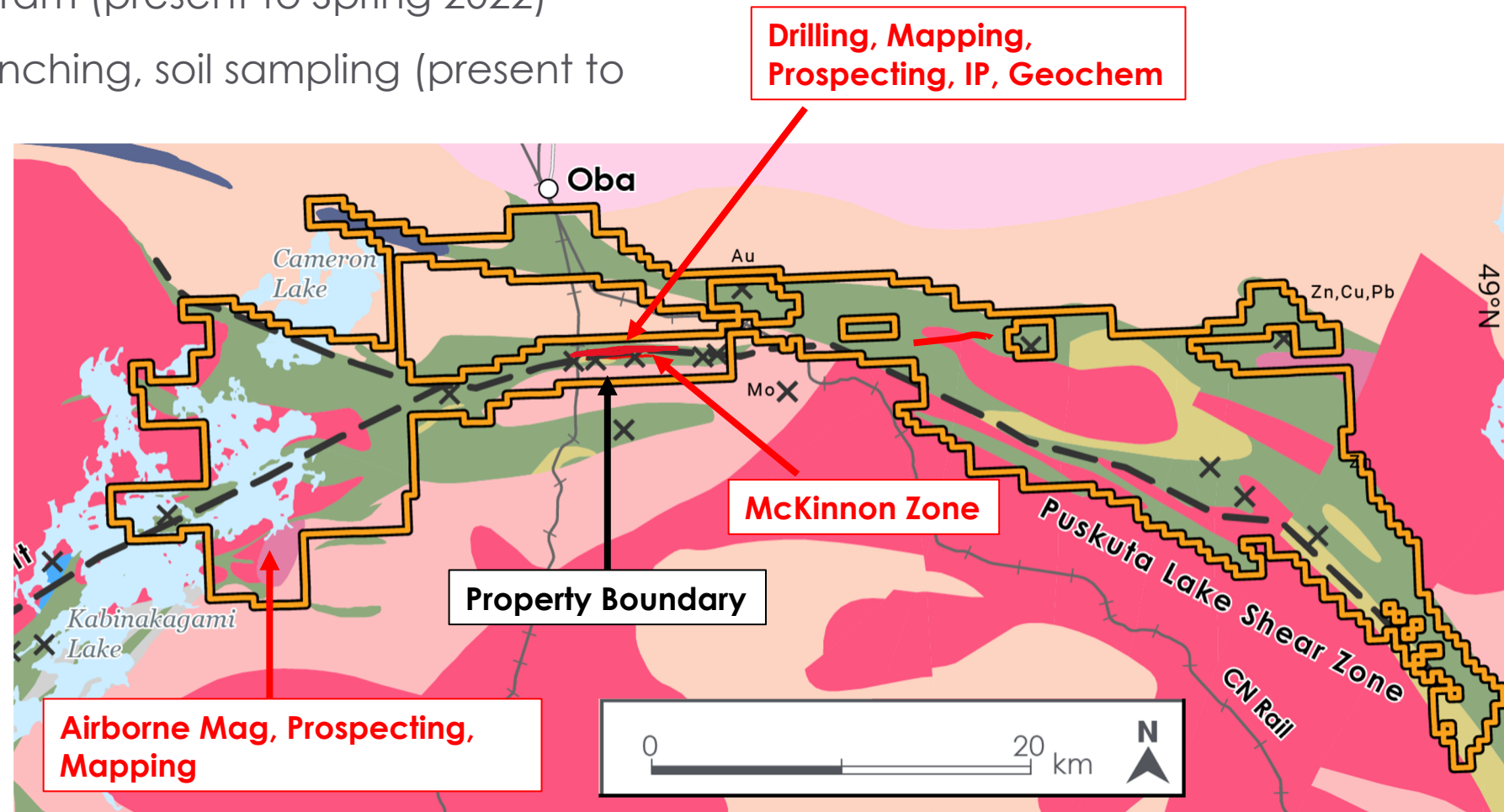
New Claims



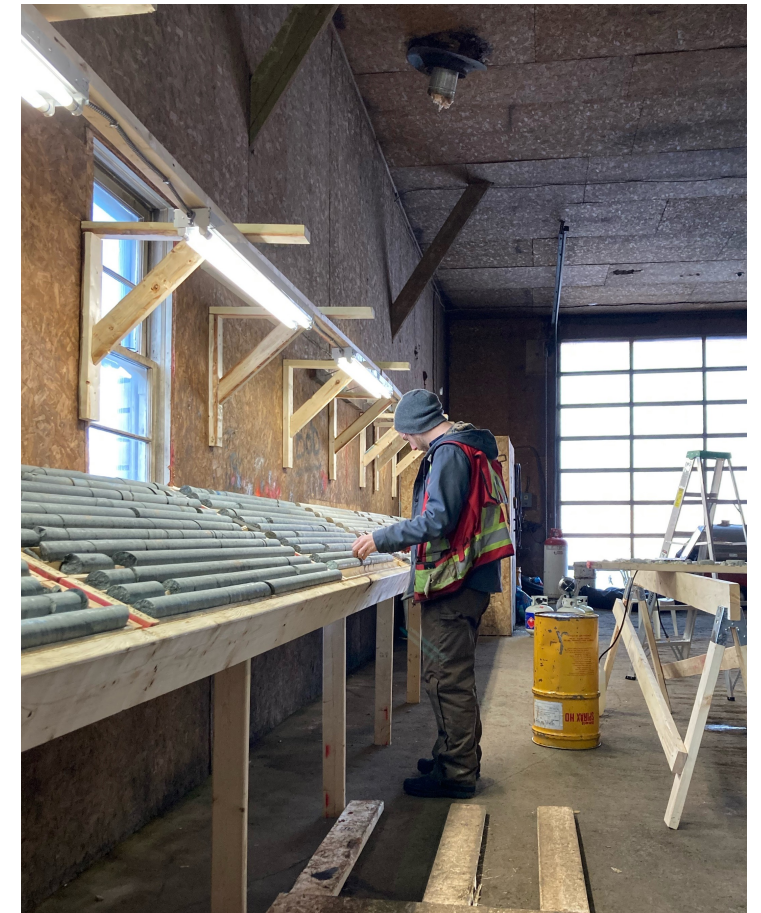
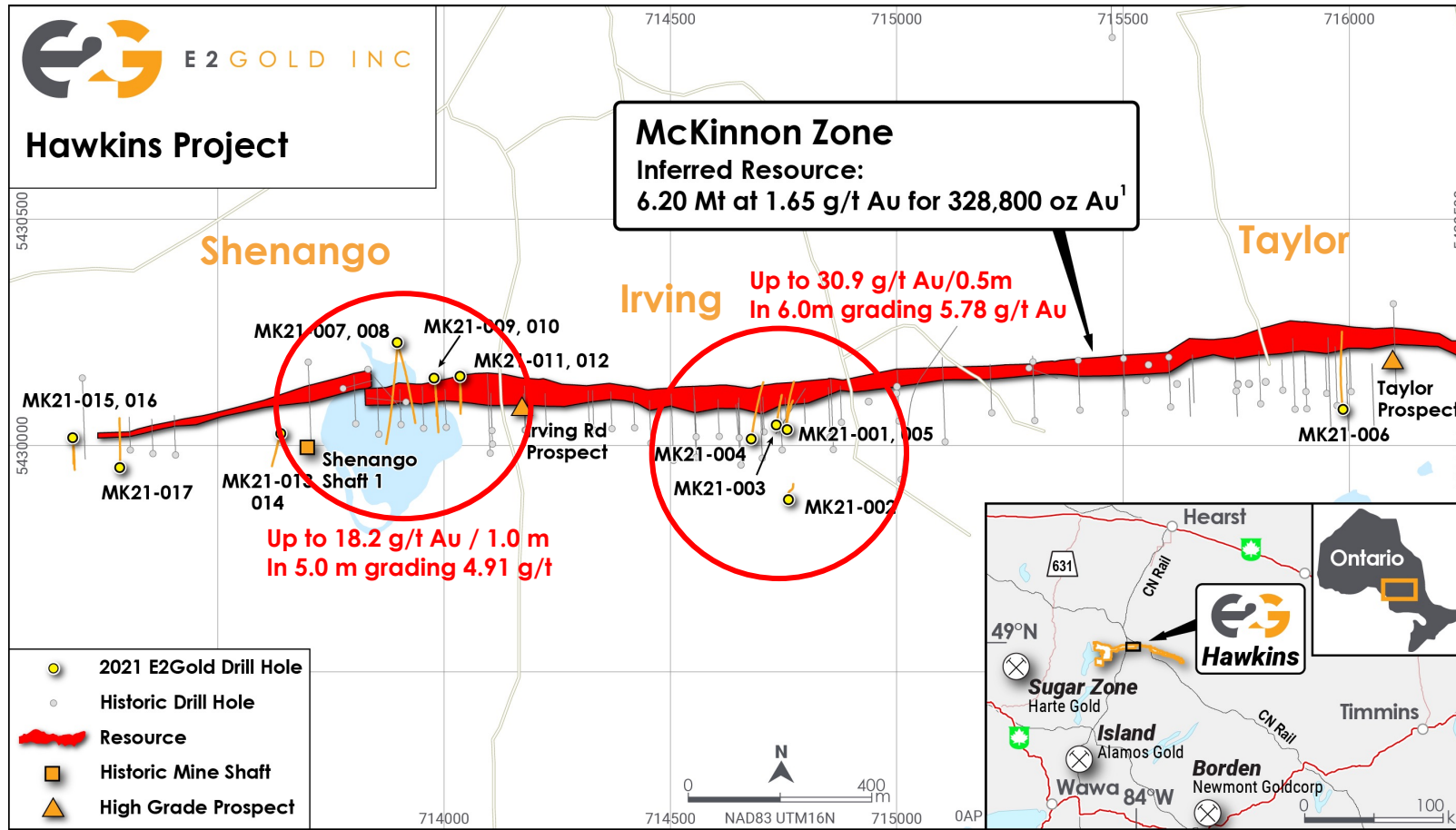
Exploration Activities



- 10,000 m Phase 2 drill program (present to Spring 2022)
- Mapping, prospecting, trenching, soil sampling (present to October 2021)
- Airborne mag over western claims (Fall 2021)
- IP around McKinnon (Winter 2021-2022)
- Ongoing geophysics data review
- Tripled Hawkins property package



Exploration focus: McKinnon Gold Zone



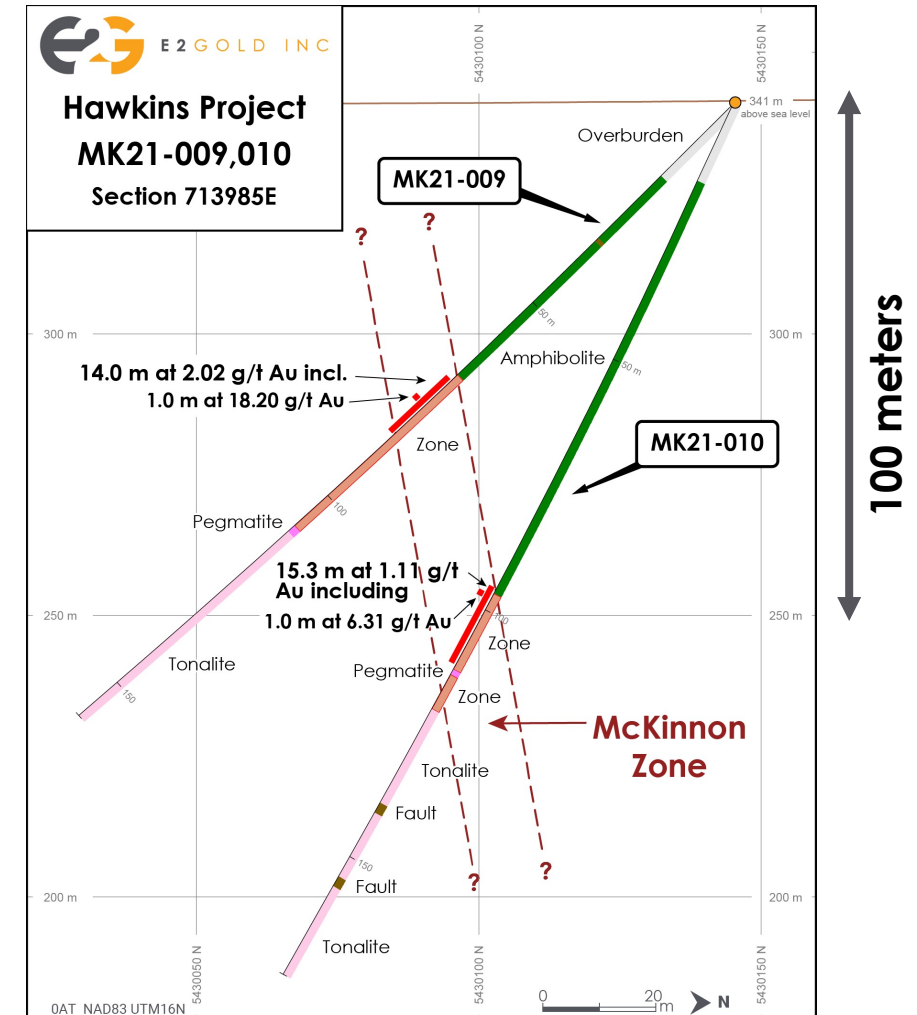
Lead. Innovate. Discover.

A Hemlo Look Alike



Hemlo: Canada's most prolific operating gold mine, having produced 24M oz Au to date. Currently operated by Barrick Gold, the mine is only 150 km west of E2Gold.

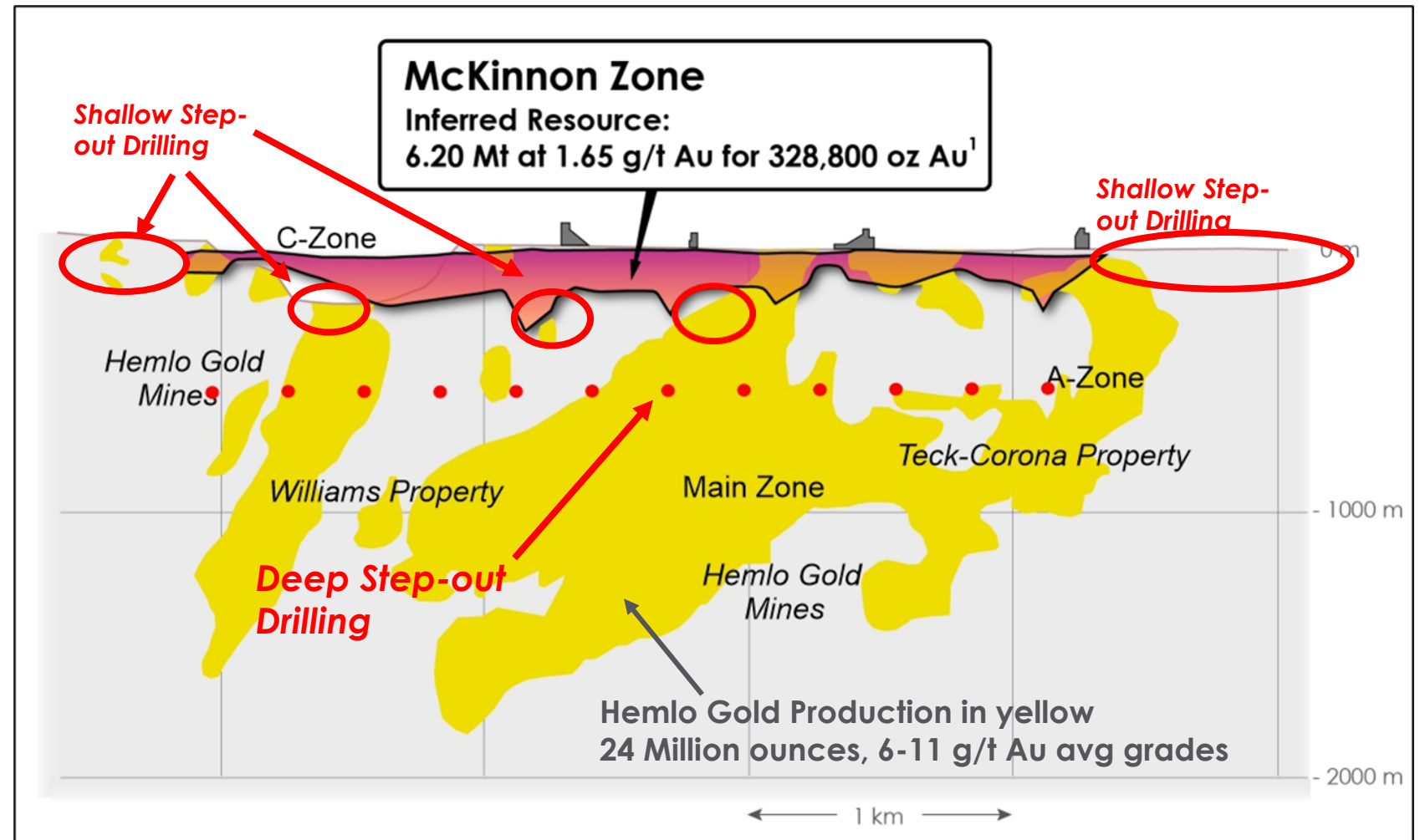
- ✓ Shared mineralization style
- ✓ Common geochemical signatures
- ✓ Similar regional geologic setting



Growth Potential of McKinnon

E2Gold's McKinnon Zone Superimposed on Hemlo Mine

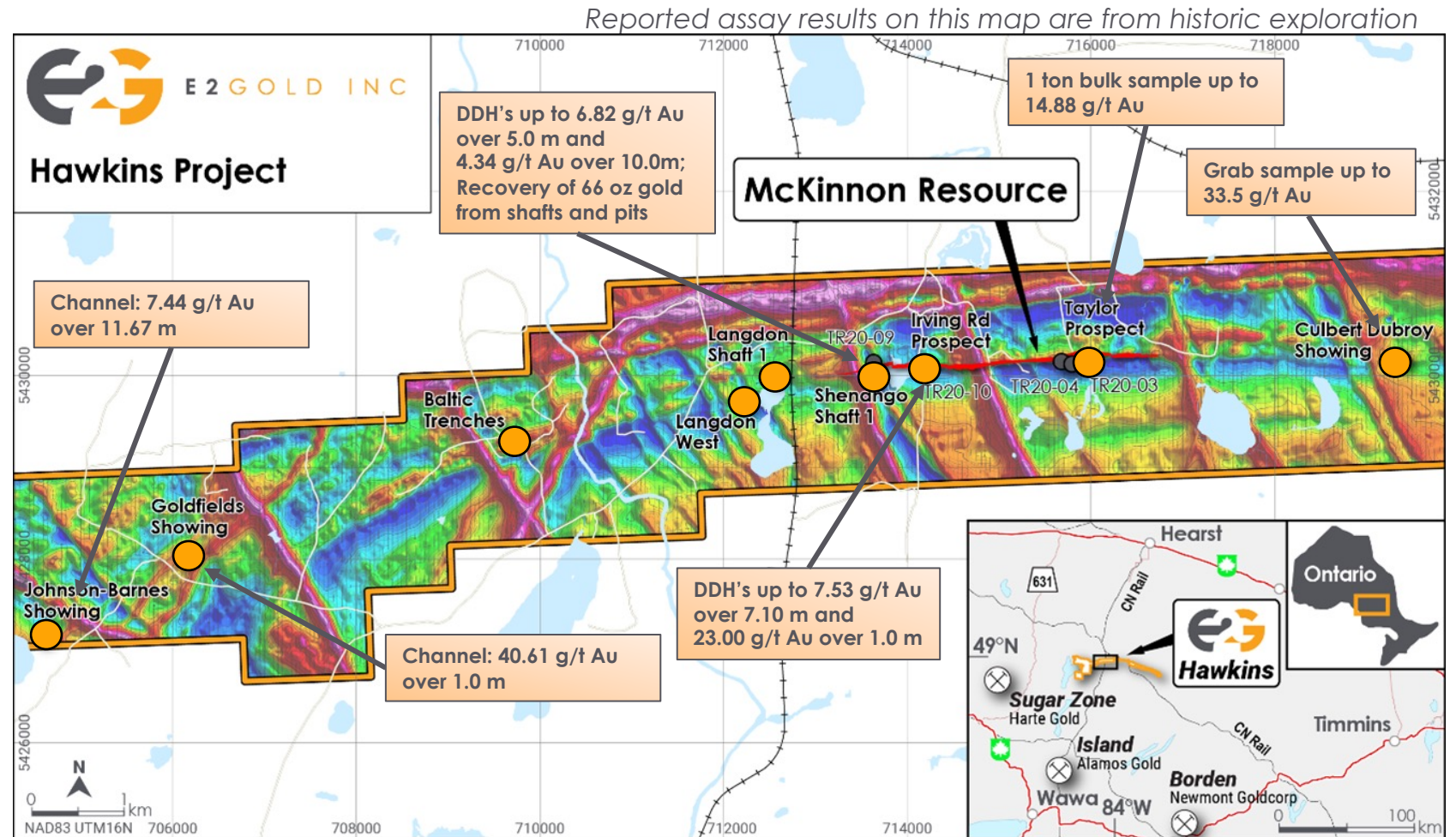
- 10,000m drill program, spread over 3 series of targets
- **Target 1:** Shallow-level step-out targets
- **Target 2:** deep-drilling program in collaboration with Crescat (500 m depth, well below the Current Resource)
- **Target 3:** Geophysical targets outside of the current Resource



Aggressive Exploration on Multiple Fronts: Other Targets



- High grade, untested historic targets over 15 km trend
- Magnetics suggest geologic continuity over the length of the trend



Contact Us

Eric Owens,
President, CEO, & Director

T: 416-509-5385

E: eric.owens@e2gold.ca

Ellie Owens,
Vice President

C: 647-575-2888

E: ellie.owens@e2gold.ca



2020 Field crew at the Goldfield's Showing

Appendix: Experienced Leadership



Eric Owens

Co-Founder, President, CEO, & Director

- PGeo, M.Sc., Ph.D. (U. Western Ontario)
- 30+ years in the exploration industry throughout Western Hemisphere; involved in the discovery of 7Moz gold
- Founded Alexandria Minerals via IPO, raised \$60M leading to discovery and acquisition of 3 million ounces of gold for less than \$17 an ounce of gold

Erik Martin

Chief Financial Officer

- BComm Accounting, CMA Certification
- Currently CFO at Murchison Minerals
- 25+ years financial accounting, reporting and consulting activities in the mining industry, including CFO positions with Flemish Gold Corp, Geomega Gold Corp, Detour Gold Corp, and accounting activities with Votrantim Metals and Canadian Mining Hall of Fame

Ellie Owens

Co-Founder, Vice President and In-House Counsel

- Member of the Law Society of Ontario, J.D. and M.Sc. (geology, Western University), B.Sc. (University of Waterloo)
- 7+ years technical and corporate: Golder Associates, Diavik Diamond Mine, Agnico Eagle's Meadowbank Mine, Atomic Energy of Canada, and securities law at Groia & Co.
- Currently sits on the PDAC Planning Committee

Natalie Pietrzak-Renaud

Vice President Exploration

- PGeo, PhD (Western University)
- 20 years exploration and research experience in the Americas with gold, diamonds, REE's, base metals, Iron ore
- Exploration at Fruta del Norte and Coffee Gold deposits as well as advanced exploration and development activities at the Renard Diamond Mine (Quebec), and Team Leader at the Strange Lake REE deposit.

Appendix: Board of Directors



In addition to Eric Owens:

David Good

Board Chair

Dr. Good, P.Geo, Ph.D. (McMaster U), MSc (U Toronto) is currently the WS Fyfe Visiting Scientist in Geology at Western University. Dr. Good was a VP Exploration for Marathon PGM until the company was acquired by Stillwater Mining Company in 2010, after which he stayed with the project as VP Exploration and Director for Stillwater Canada Ltd. In 2015, David became the CCCESD designated member of the Council of PGO.

Rod Thomas

Chair of Compensation Committee

Mr. Thomas (P.Geo), MSc (Queens U), BSc (McGill U), has over 30 years of experience in the resource industry, including over 20 years in senior management positions with companies like BHP Minerals Canada and Votorantim Metals Canada. Mr. Thomas is a Director of the Canadian Mining Hall of Fame and a member of the Chair Awards Committee of the PDAC.

Todd Hennis

Chair of Audit Committee

Mr. Hennis, BA Honors Metals Economics (Harvard), President of Salem Minerals in Colorado. Todd has 38 years experience in the metals/mining industry, beginning in the metals-trading industry, including Glencore International. Since 1987 he has run his own private mining and metals companies, while also acting as advisor and consultant to public and private companies.

Bereket Berhe

Mr. Berhe is currently a Mining Analyst at a boutique investment bank in Toronto, where his extensive background in financial and project valuation as well as his broad experience in exploration and resource geology spans the globe. Previously he was involved with various exploration and consulting companies, and co-founded, and acted as Managing Director, of two project generator companies with focus on Africa, Auri Verum Corp. and Oro Sac Corp.